

Extracurricular  
Music Activities

**February 2010**

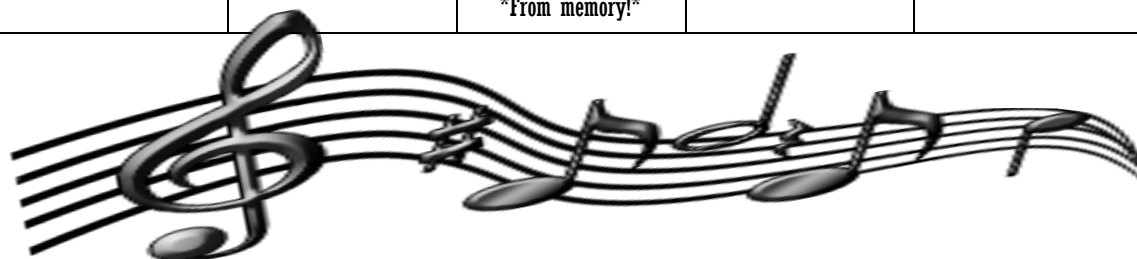
Sun	Mon	Tue	Wed	Thu	Fri	Sat
	1 K-2 Choir 3:00-4:00	2 Beg. Band 3:00-4:00 Adv. Band 4:00-5:00	3 Musical "Passengers" 3:00-4:30	4 NO BAND!	5 Noon Dismissal	6
7	8 K-2 Choir 3:00-4:00	9 Beg. Band 3:00-4:00 Adv. Band 4:00-5:00	10 Musical "Islanders" 3:00-4:30	11 NO BAND!	12 No School	13
14	15 No School	16 Beg. Band 3:00-4:00 Adv. Band 4:00-5:00	17 Musical- All 3:00-4:30	18 NO BAND!	19 Musical "Home's Not a Place" Queen, Kiki, Whattoo, "Island Magic", Muriel, C Diddy, Max 3:00-4:30	20
21	22 K-2 Choir 3:00-4:00	23 Beg. Band 3:00-4:00 Adv. Band 4:00-5:00	24 Musical- All 3:00-4:30	25 Beg. Band 3:00-4:00 Adv. Band 4:00-5:00	26 Musical Act 1, Scene 3 & 4 Act 2, Scene 1 & 2 3:00-4:30	27
28						



Extracurricular  
Music Activities

**March 2010**

Sun	Mon	Tue	Wed	Thu	Fri	Sat
	1 K-2 Choir 3:00-4:00	2 Beg. Band 3:00-4:00 Adv. Band 4:00-5:00	3 Musical- All 3:00-4:30	4 Beg. Band 3:00-4:00 Adv. Band 4:00-5:00	5 Noon Dismissal	6
7	8 K-2 Choir 3:00-4:00	9 Beg. Band 3:00-4:00 Adv. Band 4:00-5:00	10 Musical Act 2, Scene 3 & 4 3:00-4:30	11 Beg. Band 3:00-4:00 Adv. Band 4:00-5:00	12 Musical Act 2, Scene 5 & 6 3:00-4:30	13
14	15 K-2 Choir 3:00-4:00	16 Beg. Band 3:00-4:00 Adv. Band 4:00-5:00	17 Musical- All 3:00-4:30	18 Beg. Band 3:00-4:00 Adv. Band 4:00-5:00	19 Musical- All 3:00-4:30	20
21	22 K-2 Choir 3:00-4:00	23 Beg. Band 3:00-4:00 Adv. Band 4:00-5:00	24 Musical- All 3:00-4:30	25 Beg. Band 3:00-4:00 Adv. Band 4:00-5:00	26 No School	27
28	29 No School	30 Beg. Band 3:00-4:00 Adv. Band 4:00-5:00	31 Musical- All 3:00-4:30 *From memory!*			



Extracurricular  
Music Activities

**April 2010**

Sun	Mon	Tue	Wed	Thu	Fri	Sat
				1 Holy Thursday Noon Dismissal	2 Good Friday No School	3
4 <b>Spring Break!</b>	5 <b>Spring Break!</b>	6 <b>Spring Break!</b>	7 <b>Spring Break!</b>	8 <b>Spring Break!</b>	9 <b>Spring Break!</b>	10 <b>Spring Break!</b>
11 *No band or choir this week*	12 Musical Rehearsal 3:00-5:00	13 <b>No afterschool activities!</b>	14 <b>La Victoria Mission Trip!</b>	15	16	17
18 *No band or choir This week*	19 Musical Rehearsal 3:00-5:00	20 Beg Band 3:00-4:00 Adv. Band 4:00-5:00	21 Musical Rehearsal 3:00-5:00	22 Musical Rehearsal 3:00-5:00	23 Musical Rehearsal 3:00-5:00	24
25 *No band or choir this week*	26 Musical Dress Rehearsal 3:00-5:00 *In Social Hall*	27 Musical Dress Rehearsal 3:00-5:00 *In Social Hall*	28 Musical 1:00 Performance 6:00PM Arrive in SH 7:00 Performance	29 Musical 6:00PM Arrive in SH 7:00 Performance *Clean up after*	30 No School	

All students who attend an evening performance of the Musical “Lost at Sea” on April 22nd or 23rd will receive EXTRA CREDIT for music class!

Extracurricular  
Music Activities

**May 2010**

Sun	Mon	Tue	Wed	Thu	Fri	Sat
						1
2	3 K-2 Choir 3:00-4:00	4 Beg. Band 3:00-4:00 Adv. Band 4:00-5:00	5	6 Beg. Band 3:00-4:00 Adv. Band 4:00-5:00	7 Noon Dismissal	8
9	10 K-2 Choir 3:00-4:00	11 Beg. Band 3:00-4:00 Adv. Band 4:00-5:00	12 Spring Concert 7:00PM Social Hall	13 Beg. Band 3:00-4:00 Adv. Band 4:00-5:00	14	15
16	17	18 Beg. Band 3:00-4:00 Adv. Band 4:00-5:00	19	20 Beg. Band 3:00-4:00 Adv. Band 4:00-5:00	21	22
23	24	25 Beg. Band 3:00-4:00 Adv. Band 4:00-5:00	26	27 Beg. Band 3:00-4:00 Adv. Band 4:00-5:00	28	29
30	31					

All students who attend the Spring Concert will receive  
EXTRA CREDIT for music class!

Extracurricular  
Music Activities

**June 2010**

Sun	Mon	Tue	Wed	Thu	Fri	Sat
		1	2	3	4	5
6	7	8	9	10	11	12
13	14	15	16	17	18	19
20	21	22	23	24	25	26
27	28	29	30			

**Primary Business Address**  
Your Address Line 2  
Your Address Line 3  
Your Address Line 4

**Phone: 555-555-5555**  
**Fax: 555-555-5555**  
**E-mail: someone@example.com**

